

GLAZED STEEL DOOR

BLAST MITIGATION PRODUCT

B-Pro 750ST

About the company

B-Pro Safeguard, Inc. was created to serve the requirements of the Department of Defense UFC 4-010-01 and the GSA and to provide the U.S. government the most advanced and cost effective protective glazing systems. The B-Pro products were developed by the world's most experienced engineers in the field and were subjected to a rigorous series of blast testing.

Blast Mitigation Glazed Steel Doors Technology

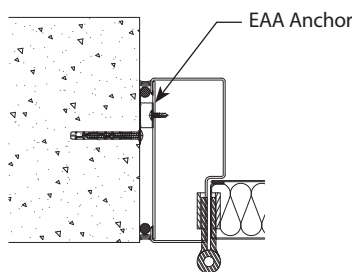
The B-Pro 750 ST glazed steel door offers an extraordinarily sophisticated, patented Energy-Absorbing system approach. This technology utilizes the door frames, glazing, hardware and anchoring system as energy dissipating components. Once hit by the blast wave dynamic loading, those components are gradually deforming, hence absorbing a significant portion of the blast energy which allows the glazed door to stay in the opening and to protect the people within the building. For the conventional blast steel door, the expansion bolts for fixing the door frame to the concrete will subject to shear, and may break if the door should take that high blast load and the high blast resistance door requires the welding to the embedded sub-frame or the door frame should be casted in the wall. However, B-Pro's steel door with innovative energy absorbing anchor (EAA) system does not require the use of the subframe or casting anymore. This door can be equipped with any specified hardware requirement. The glazed steel door equipped with Insulated Glass Unit to comply with DoD AT/FP glazed door requirement.



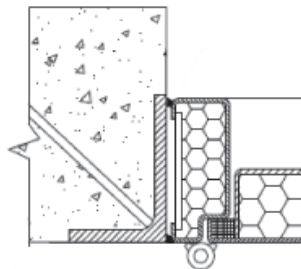
*HTL Blast Test

Technical Support and Fabrication

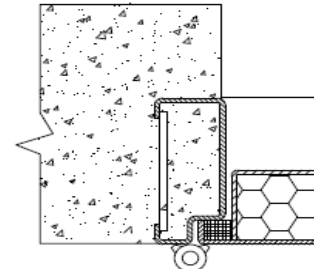
B-Pro Safeguard erected a state of the art plant quipped with modern machinery dedicated for the manufacturing of blast mitigation door systems. The B-Pro team is committed to quality, service and support.



<EAA Anchor system>



<Not required>



<Not required>

Blast Rating

B-Pro Blast Levels	A*	B	C	Extreme blast environment
Impulse (psi*msec)	43	100	160	Check with the B-Pro technical support before specifying
Pressure (psi)	7	40	45	
B-Pro 750ST	V	V	X	

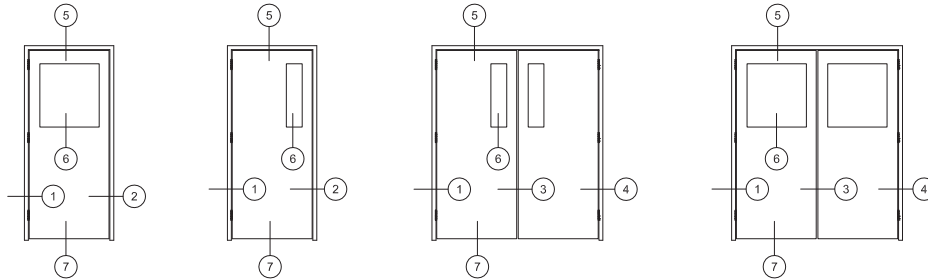
*Level A corresponds to the UFC 4-010-01 DoD Min. requirements . where "conventional construction standoff distances are achieved".

B-Pro 750ST

GLAZED STEEL DOOR

ELEVATIONS AND DETAILS

ELEVATIONS



DETAILS

